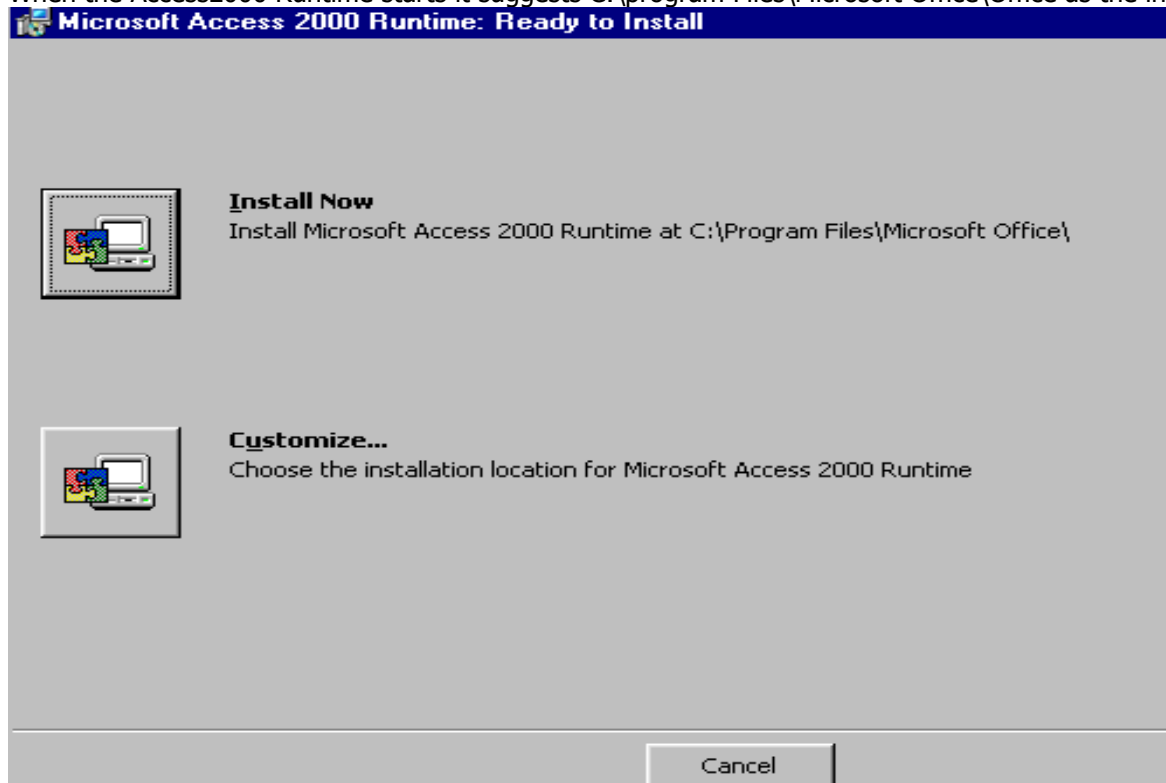


NOTES ON ACCESS RUNTIME INSTALLATION

When the Access2000 Runtime starts it suggests C:\program Files\Microsoft Office\Office as the installation path.

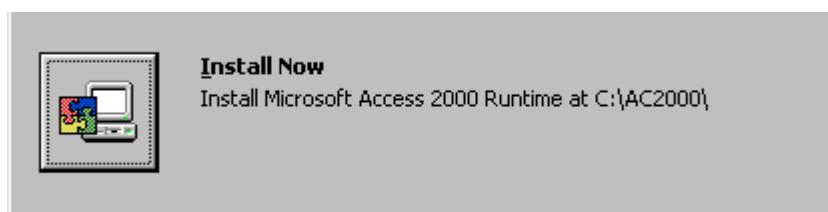


Do not accept this as the installation path

Click on **Customise** and change the path to read C:\MyCoName\ as shown below



Then click on the Ok button and you will return to the C:\MyCoName\ : installation path should now be changed to C:\MyCoName\ as shown below.



Then continue with the installation by clicking on the **Install Now** button
(NOTE! [C:\AC2000](#) shown will be C:\MyCoName\)

If you have more than one copy of access on the computer you will need to adjust the shortcuts to point to the correct versions. You should change the shortcut target from C:\MyCoName\ProgName.mde to be as follows :

C:\MyCoName\Office\Msaccess.exe C:\MyCoName\ProgName.mde

NOTE! If you there is a version of Access97 RunTime installed then it should be uninstalled first of all.