

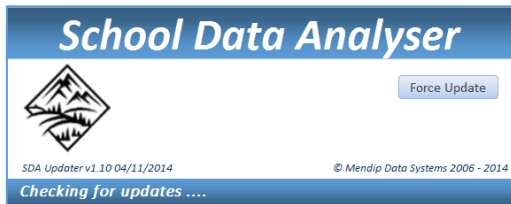
## SDA updater utility

Periodically, new versions of the program are supplied with performance improvements and additional features. Upgrades are normally very quick and easy to install.

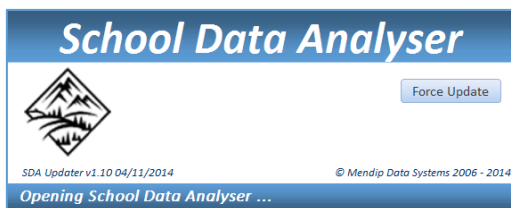
### 1. Using the SDA Updater

When staff log into **School Data Analyser**, the program checks that the latest version is installed.

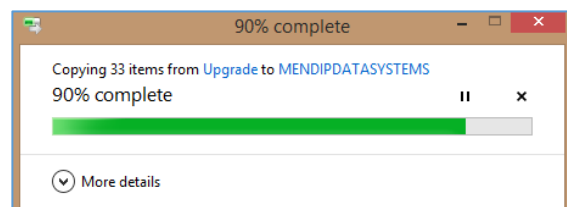
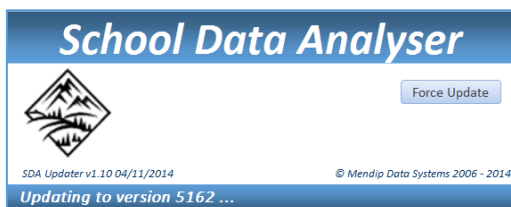
This is done using the small utility file, **SDAUpdater.accdb**, located in the main program folder. This is the splash screen seen when **School Data Analyser** is started from the desktop shortcut



If the current version is up to date, the main program file is loaded:

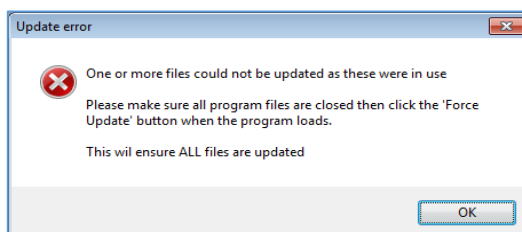


If a newer version is available, the updated files are copied from the **Upgrade** folder to the user's computer. A green progress bar is displayed whilst this happens.



This should normally take less than 30 seconds to complete & the user can then log in as normal.

In the unlikely event of problems, run the upgrade again using the **Force Update** button. For example, if any program files are open when the upgrade is running, this message is shown:



## 2. **Updating the SDA updater**

If the **SDA updater** file **SDAUpdater.accdb** is itself updated, the SDA manager will:

- run this in the program folder **C:\Programs\MendipDataSystems\SDA** so that the program links are updated for your school
- copy the new version to the upgrade folder containing **SDA.accdb**

IMPORTANT: Do NOT run the updater from the upgrade folder

The new version will be copied to the user's computer when a new version of **SDA** is released or if the **Force Update** button is clicked.

This works as follows:

- When **SDA updater** updates files, it copies all files from upgrade folder except itself!
- It also looks for newer version of **SDAUpdater** and copies newer version from upgrade folder to user's computer as **SDAUpdaterNEW.accdb**
- When main program **SDA.accdb** opens, it looks for **SDAUpdaterNEW.accdb** and renames it as **SDAUpdater.accdb**