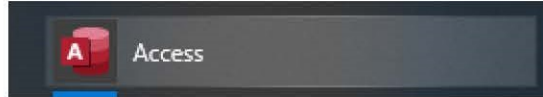
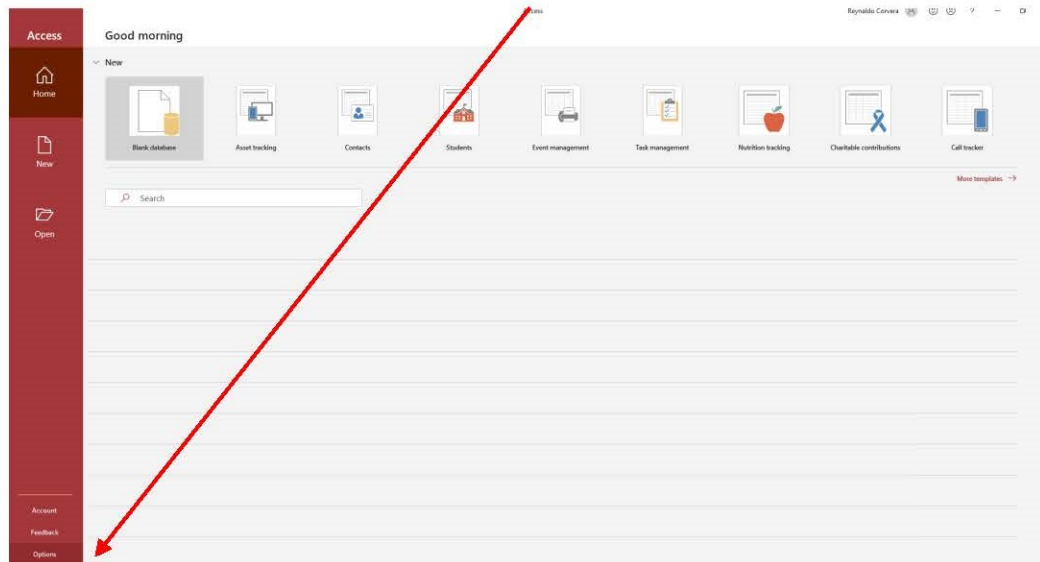
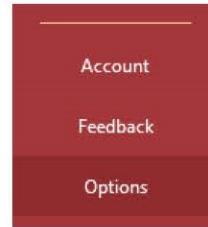


SYSTEM SETTINGS BEFORE USING DATABASE

STEP - 1 ➤ Open application Microsoft Access

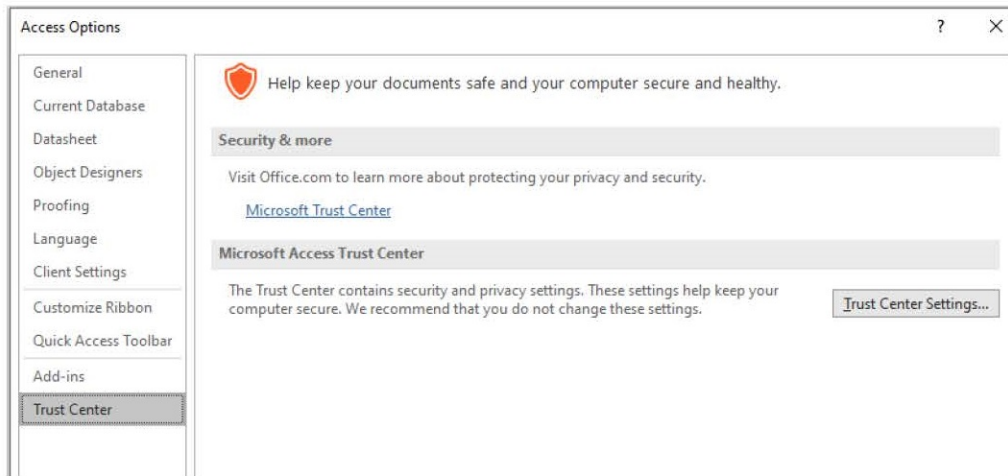
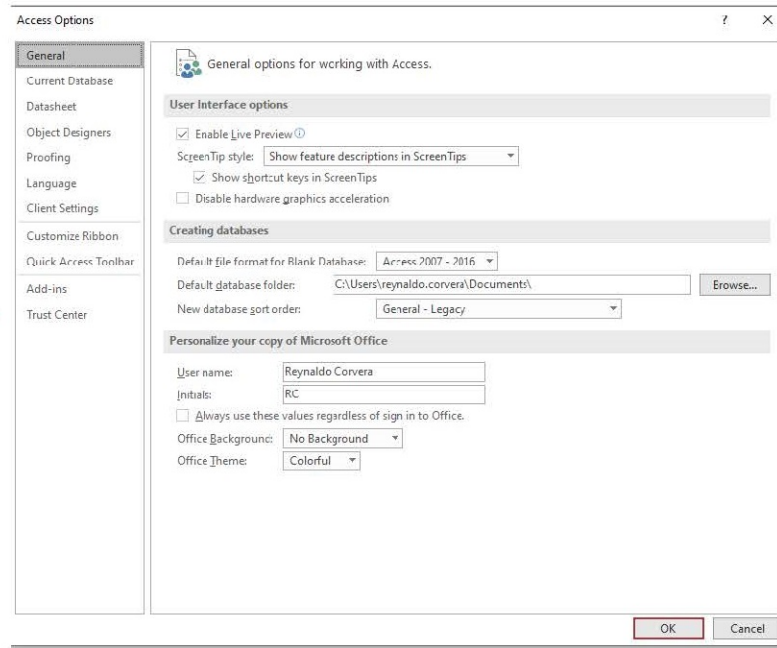


STEP - 2 ➤ Select Option



STEP - 3

➤ Select Trust Center



STEP - 4

➤ Select Trust Center Settings



STEP - 5

➤ Select Trusted Location

Trust Center



- Trusted Publishers
- Trusted Locations
- Trusted Documents
- Trusted Add-in Catalogs
- Add-ins
- ActiveX Settings
- Macro Settings
- Message Bar**
- Privacy Options
- Form-based Sign-in

Message Bar Settings for all Office Applications

Showing the Message Bar

- ☒ Show the Message Bar in all applications when active content, such as been blocked
- ☐ Never show information about blocked content

Policy Tips

- ☒ Show Policy Tip in the Message Bar. Turning this off will disable all Policy it.

STEP - 6

➤ Select Add New Location



Add new location...

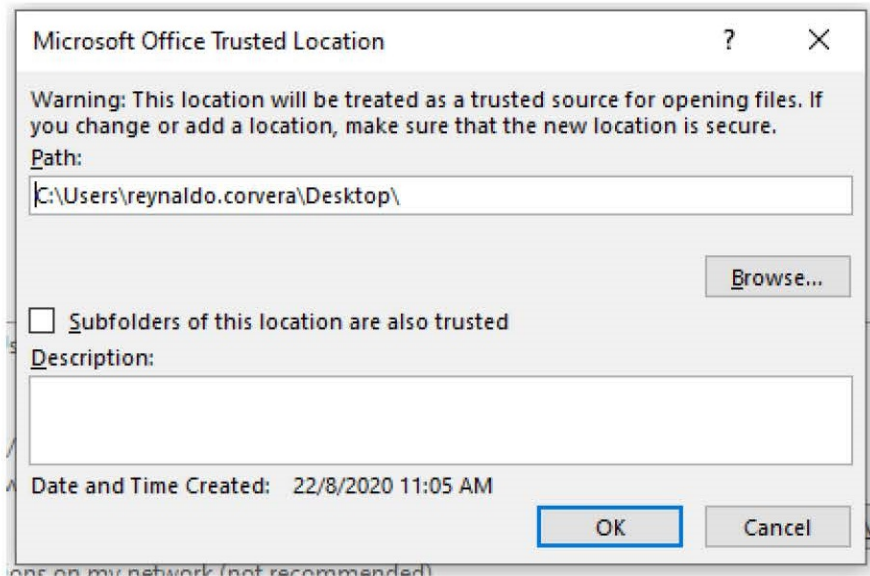
Remove

Modify...

etwork (not recommended)

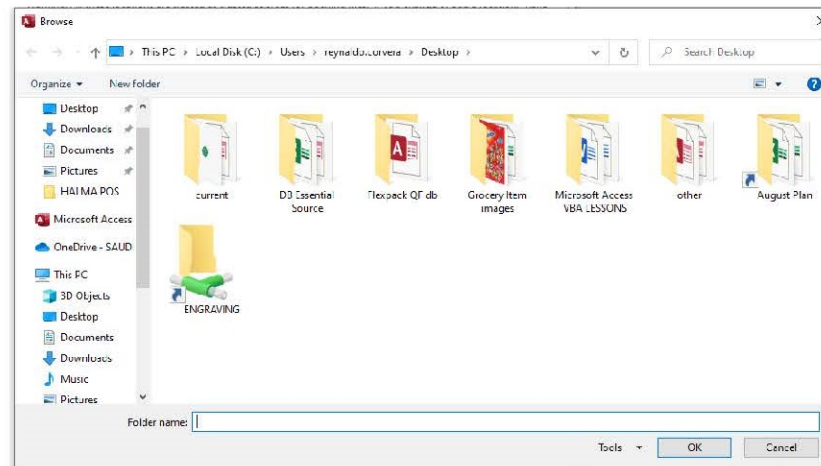
STEP - 7

✓ Click Browse and select any location



Now you can choose any computer locations like: Desktop, Documents or Disk Drive (D, E, F) where the database to be save or reside.

I recommend on drive D or E to make your database safe if computer will down.

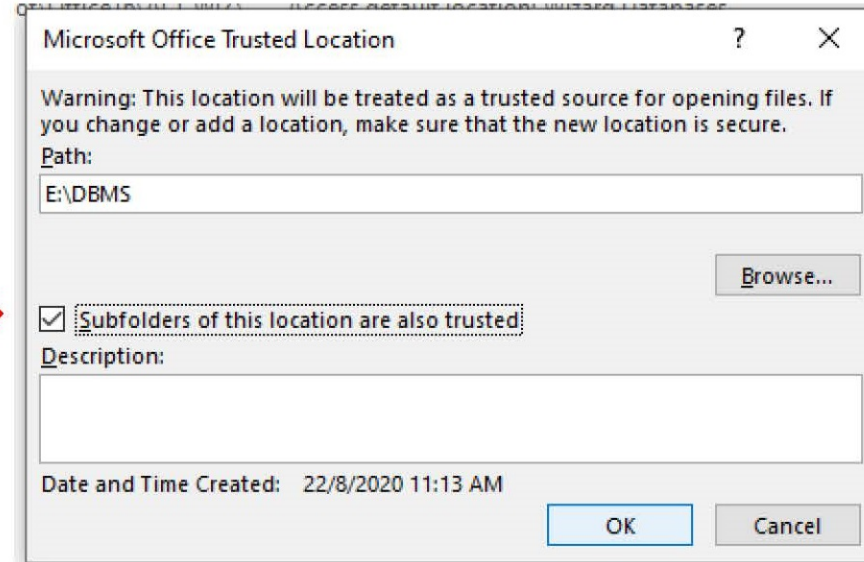


STEP - 8

❑ This figure: I select drive with folder DBMS where my SMS Database file resides

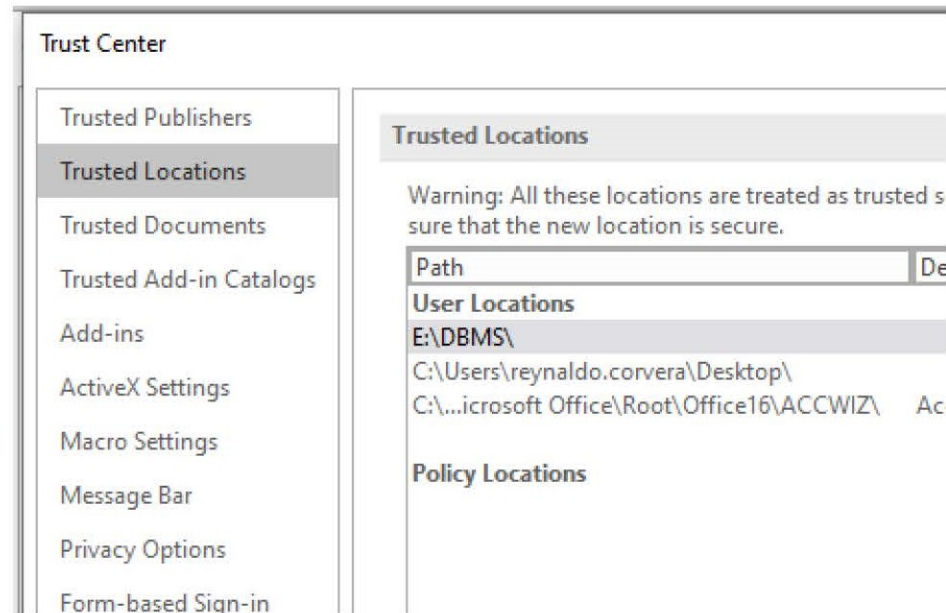
❑ Check also for subfolder

❑ Click Ok



STEP - 9

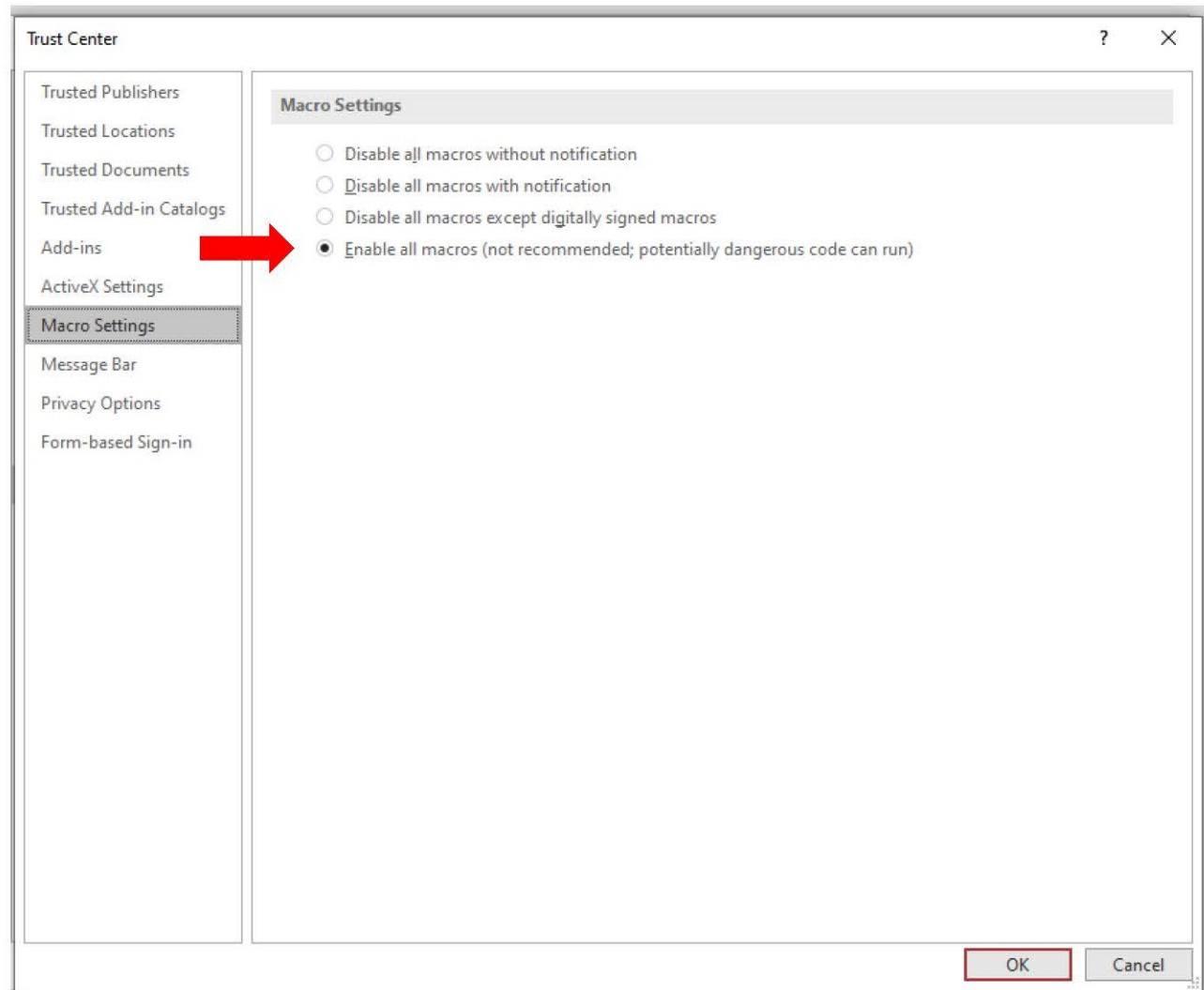
❖ Select Macro Settings



STEP - 10

Macro Setting

- ✓ Must select enable
- ✓ Click Ok



STEP - 11

- Click ok

CONGRATULATIONS!!!

Now your system is ready to the run the database